

## Hebrew Character v Setaceous Hebrew Character v Double Square-spot



This short guide focuses on three potential confusion species and illustrates the importance of providing photographic evidence, even for otherwise common moths, when they are encountered well outside their normal flight period. During verification our team encountered some unusually late records for Hebrew Character. Without any photographic support, it was difficult to reconcile these with the species normal flight period.

Similarities in the identification process of these three Noctuid moths:

- Flight times are important along with the subtle differences in markings, variation and variable features.
- These three species all have similar forewing markings that show some resemblance to the Hebrew alpha character “nun”.
- Therefore care and attention needs to be paid to this trio when recording individuals that do not conform to a classic specimen.



Hebrew Character - Double Square-spot - Setaceous Hebrew Character

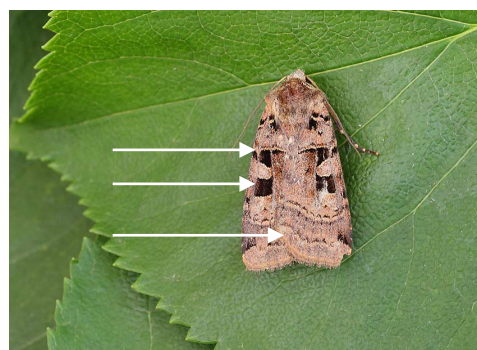
### Hebrew Character *Orthosia gothica*

- Its forewings are typically greyish-brown to purplish red-brown, with less wing overlap.
- The typical forms have a distinct black mark on the central forewing, but some forms, especially in northern parts, have this mark the same as the ground colour, or even paler. This mark is unique among spring-flying moths.
- Flight period - one generation typically March-April but can be as early as February and as late as May. Rarely in June.



### Double Square-spot - *Xestia triangulum*

- Forewing is held in a more relaxed position giving the moth a broader and more wedge shaped appearance.
- Generally the ground colour is brownish to greyish with similar wing markings to the other two species.
- There are two black markings, one is square-shaped (reminiscent of Hebrew Character) The other is roughly triangular in shape.
- A broad head with pale extensions and distinct head tufts and when viewed head on, a pale forehead band.
- Hindwing is dark with a lighter and contrasting fringe
- Flight Period June-July



### Setaceous Hebrew Character - *Xestia c-nigrum*

- It has a bright, straw-coloured triangular marking adjacent to the black "character" mark on the leading edge of the forewing.
- The forewing ground colour is greyish-brown or dark grey.
- Slimmer looking than Hebrew Character..
- Flight period - Often double brooded - May-June & August-September. A key differentiator from the spring flying Hebrew Character.

